

 **TOYOTA RAV4**
oh what a *feeling!*

Engineered for Active Lifestyles.





More options for more action.

RAV4, The Original SUV, gives you more of what you want. Available in an Active All Wheel Drive (AWD)* or Two Wheel Drive (2WD) variant. RAV4 is driven by an intelligent 2.4 litre twin cam engine – delivering 125kW of power or an impressive 3.5 litre dual VVT-i quad cam V6* with 201kW on tap. RAV4 and RAV4 V6, they're designed to be uncomplicated, for no-nonsense fun.

Big on comfort and space.

Clever engineering has resulted in a spacious cabin with passenger car-like levels of comfort. With impressive versatility and comfort for five adults and significant boot space that becomes even larger when the back seats are folded flat, you'll have all the cargo room you'll need. There are also plenty of handy storage compartments like upper and lower gloveboxes, cupholders, a two shelf centre console box and bottle holders in each door.

*3.5L RAV4 V6 models not available in 2WD.
Front Cover – ZR6 model shown.



SX6 model shown.

Get to grips with technology.

There's a comprehensive Driver Assist Technology (DAT) package to help make the going easier. And your choice of Active All Wheel Drive (AWD) – allowing the vehicle to switch continuously from front wheel drive to AWD, and automatically engaging when you lose traction – or the urban 2WD option that allows you to take on the concrete jungle with fewer trips to the petrol station. In all RAV4 models Vehicle Stability Control (VSC) and Traction Control (TRC) ensure a greater sense of control in challenging conditions. Hill-start Assist Control (HAC) and Downhill Assist Control (DAC)[‡] ensure greater driveability on steep slopes, even off-road. Toyota's Vehicle Control Management System (VCMS) links the various traction enhancing technologies together for greater vehicle control.

Greater degree of protection.

A total package of active safety measures gives you a greater feeling of confidence. Toyota's Active Braking with intelligence (AB-i) is standard across the range and includes Anti-skid Braking System (ABS) with Brake Assist (BA) and Electronic Brake-force Distribution (EBD).

The body structure is also big on engineering advances which help improve driving stability and steering response for sportier driving while improving passive safety as well. The Supplementary Restraint System (SRS) airbag package has up to 7 airbags available including dual stage front airbags as standard. In selected models, front side and side curtain airbags help minimise injury in side collisions. That's powerful thinking.

[‡]Available on Automatic models only.



GET OUTDOORS WITH RAV4 ACCESSORIES.

RAV4 Cruiser shown in Silver Pearl accessorised with Deluxe Alloy Nudge Bar, Bonnet Protector, Headlamp Covers, Weathershields, Side Steps, Aero Roof Racks (Roof Rail Type), 2 x Pro Rider Bicycle Carriers and 4 x Lava Alloy Wheels (17"x7").

When you choose Toyota Genuine Accessories you're adding even more personality, protection and practicality to your Toyota – tailoring it to your individual lifestyle needs. Toyota Genuine Accessories are designed, tested and manufactured to strict Toyota Standards. This quality and reliability is supported with our Toyota Warranty**.



Alloy Nudge Bar – Airbag compatible
AWD models only



Aero Roof Racks (Non Roof Rail type)
CV/CV6 only



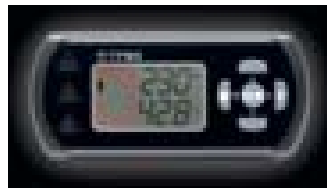
Ski & Snowboard Carriers – 4 or 6
(Vehicle shown is Kluger KX-R)



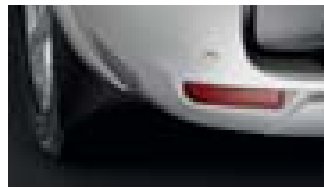
Kayak Carrier
(Vehicle shown is Kluger KX-R)



Alloy Wheel Lock Nut Set



Tyre Pressure Monitoring System



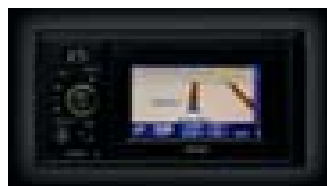
ParkAssist* – Reverse Parking Sensor
(2-Head Kit)



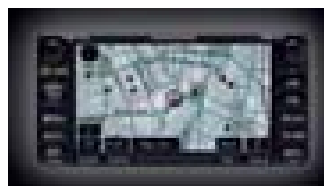
Towbar,* Towball & Trailer Wiring Harness
– RAV4 1500kg (braked), RAV4 V6 1900kg (braked) – (Sold Separately)



All Weather Rubber Cargo Mat



FollowMe Sound & Navigation System[†]
– Includes Bluetooth™ Handsfree Communications, Video, USB, iPod®^, MP3 & (optional) Rear View Camera Compatibility*
All 4cyl. models; V6 CV6 only



Satellite Navigation Audio System[†] – Includes 4 in-dash MP3 CD Changer & Radio with Bluetooth™ Handsfree Communications & (optional) Auxiliary Audio Input (optional) Rear View Camera Compatibility*
All 4 cyl. models; V6: CV6 and SX6 only



Display Audio System – Includes 6 in-dash MP3/CD Changer & Radio with Advanced Bluetooth™ featuring Handsfree Communications & Stereo Audio Streaming, USB/Auxiliary Audio Input/iPod®^ & (optional) Rear View Camera Compatibility*
Standard on Cruiser, Cruiser L and SX6



Sports Vest Seat Covers

TOYOTA GENUINE ACCESSORIES ARE COVERED BY OUR TOYOTA WARRANTY**

Some Toyota Genuine Accessories are not applicable to all models/grades. Refer to the Accessories brochure (available from your Toyota salesperson) or visit accessories.toyota.com.au for details on warranty and which Accessories are suitable for your vehicle. Pictured accessories are sold separately. Accessory colours shown may vary from actual colour to the printing process.

- * ParkAssist is designed as a driver assist device only and should not be used as a substitute for skilled driving and safe parking practices. The area into which the vehicle is to be reversed must be visually monitored by the driver while parking. The rear view camera does not provide a comprehensive view of the entire rear area of vehicle and should only be used as an aid for viewing when reversing.
- # Towing capacity subject to regulatory requirements towbar design, vehicle design and towing equipment limitations.
- † Current navigation mapping database encompasses major capital and primary national road networks as well as offering some coverage in regional areas.
- > The Bluetooth word mark is owned by Bluetooth SIG, Inc. Bluetooth™ will only operate with telephones enabled with compatible Bluetooth™ wireless technology (HFP (Hands Free Profile) v1.0 or later and OPP (Object Push Profile) v1.1 or later international standards). OPP functionality only works on satellite navigation equipment.
- ~ Streaming Bluetooth™ Audio compatibility requires devices that are enabled with compatible technology Bluetooth™ v1.2 and must also be enabled with both A2DP (Advanced Audio Distribution Profile) v1.0 or later & AVRCP (Audio/Video Remote Control Profile) v1.0 or later.
- ^ iPod® is a registered trademark of Apple Inc.
- ** All Toyota Genuine Accessories purchased and fitted to a Toyota are warranted for the remainder of the New Vehicle Warranty or 12 months, whichever is greater. Toyota Genuine Accessories purchased from an authorised Toyota Dealer over the counter are warranted from the date of purchase for one year. Conditions apply. All warranties are additional to the implied warranties under the Trade Practices Act 1974.

TOYOTA GENUINE
PARTS, SERVICE & ACCESSORIES



CV model shown.

RAV4 has more in store.

Powered by a high tech 2.4 litre DOHC 4-cylinder with the added efficiency of VVT-i, RAV4 is equipped to take you wherever you want to go. You've the choice of a 5-speed manual or 4-speed automatic and the practicality of a generous 1500kg towing capacity*. Electric Power Steering (EPS) with tilt and telescopic adjustment is standard.

A 6-speaker, AM/FM MP3-compatible audio system* with single CD player is standard in RAV4 CV, complete with a USB input for your iPod®. Also standard is inbuilt Bluetooth™ for hands free communication.

RAV4 Cruiser is distinguished by its five spoke alloy wheels and overfender flares. Embellishments inside extend to a premium gear shift lever, a premium steering wheel with audio controls and front dual zone climate control. Cruiser and Cruiser L models come with a 6-disc CD changer incorporating a 4.3" LCD* display that lets you view your stored phone numbers and displays the music files on your iPod®.

Cruiser L comes with all these features along with a leather accented interior with power adjusted driver's seat and power tilt and slide moonroof.

All RAV4 models are equipped with the reassurance of Traction Control (TRC), Vehicle Stability Control (VSC) and Hill-Start Assist Control (HAC). Automatic equipped models have the reassurance of Downhill Assist Control (DAC).

The intensity of the RAV4 V6.

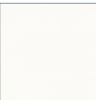
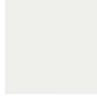


Enjoy all the space and practicality of RAV4 with the added punch of a big 3.5 litre dual VVT-i V6 backed by a smooth shifting 5-speed automatic. RAV4 V6 gives you 201kW of adventure seeking power, yet returns an economical fuel consumption figure of just 10.5 L/100km.* A big 1900kg braked towing capacity* means you don't need to leave anything behind.

On the outside a chrome front grille, V6 badge and darkened headlamps set RAV4 V6 models apart. A full Driver Assist Technology (DAT) package is standard, as VSC, TRC, HAC and DAC provide enhanced control in challenging conditions. Along with driver and front passenger, front side, side curtain shield and driver's knee SRS airbags are also part of the package for extra peace of mind. Interior features of the V6 models are similar to those in the 4-cylinder models.

RAV4 V6 SX6 and ZR6 models stand alone with their unique six spoke 17" alloy wheel design and also feature overfender flares. The ZR6 comes fully equipped with the guidance of a DVD-based Satellite Navigation system†, and heated front seats for climate comfort.

#Towing capacity subject to regulatory requirements, towbar design, vehicle design and towing equipment limitations. #Fuel consumption will vary depending on driving conditions/style, vehicle conditions and options/accessories. Source of fuel consumption data: ADR81/02 combined (L/100km) for auto models. †Current navigation mapping database encompasses major capital and primary national road networks as well as offering some coverage in regional areas. ≥The Bluetooth™ word mark is owned by Bluetooth SIG, Inc. Bluetooth™ will only operate with telephones enabled with compatible Bluetooth™ wireless technology (HFP (Hands Free Profile) v1.0 or later and OPP (Object Push Profile) v1.1 or later international standards). *Audio unit available from November 2009 production. ^iPod® is a registered trademark of Apple Inc.

Colour guide.

									
Glacier White (040)*	Wildfire (3R3)*	Crystal Pearl (070)**	Graphite (1G3)*	Liquid Bronze (4T3)*	Sandstone (4T8)*	Silver Pearl (1F7)*	Blue Storm (8R3)*	Ebony (202)	Envy (6T3)*

Note: Toyota Australia reserves the right to vary and discontinue from time to time the interior and exterior colours, trims and colour/trim/model combinations currently available. Colours and trims displayed here are a guide only and may vary from actual colours due to printing/display process. See your Toyota dealer to confirm colour/trim/model availability when ordering your vehicle.

*Indicates mica, metallic or pearlescent paint which is available at extra cost. +Available on CV & CV6 models only. †Not available on CV & CV6 models.

TOYOTA SERVICE ADVANTAGE CUTS NEW CAR RUNNING COSTS

Toyota Service Advantage makes owning your RAV4 even more economical because you are entitled to low cost scheduled servicing. That's up to 6 standard services during the first three years or 60,000km, whichever occurs first. Terms and conditions apply. See your Toyota dealer or advantage.toyota.com.au for eligibility, pricing and more information. Toyota Service Advantage pricing represents the maximum amount payable for standard scheduled servicing which is as per 'maintenance for normal operating conditions' outlined in the Warranty & Service Handbook's service schedule. Service Advantage eligibility excludes Government and Rental vehicles and certain other exclusions apply.



RAV4 & RAV4 V6 technical specifications

Engine

- Engine type – Petrol
- L4 Engine displacement – 2362cc
- V6 Engine displacement – 3456cc
- L4 Engine configuration – 4-cylinder in-line
- V6 Engine configuration – 6-cylinders V type
- Valve train – Double Over Head Camshaft (DOHC) with 4 valves per cylinder
- L4 Valve mechanism – Variable Valve Timing with intelligence (VVT-i)
- V6 Valve mechanism – Dual Variable Valve Timing with intelligence (Dual VVT-i)
- Max. power – 125kW/6000rpm (4 cyl), 201kW/6200rpm (V6)
- Max. torque – 224Nm/4000rpm (4 cyl), 333Nm/4700rpm (V6)

Fuel

- Fuel system – Electronic Fuel Injection (EFI)
- Fuel type – 91 RON unleaded

Fuel economy*

- Manual AWD CV, Cruiser & Cruiser L – 9.1L/100km
- Manual 2WD (CV & Cruiser) 8.4L/100km
- Automatic AWD CV, Cruiser & Cruiser L – 9.6L/100km
- Automatic 2WD (CV & Cruiser) – 9.1L/100km
- V6 10.5L/100km

Transmission

- Driveline:
 - AWD – Active All Wheel Drive
 - 2WD – Two Wheel Drive (only available on the CV and Cruiser models)
- L4 Transmission – 5-speed manual/4-speed electronically controlled automatic with lock-up torque converter (optional)
- V6 Transmission – 5-speed automatic transmission with Super Intelligent Electronically Controlled Transaxle

Steering

- Steering system – Rack and pinion
- Steering operation – Electric Power Steering (EPS)
- Turns lock to lock – 2.8
- Turning circle – 10.6m kerb-to-kerb

Brakes

- Front – 296mm ventilated disc
- Rear – 281mm solid disc
- Active Braking with intelligence incorporating Anti-skid Braking System (ABS) with Brake Assist (BA) and Electronic Brake-force Distribution (EBD)

Suspension

- Front – Independent MacPherson strut type
- Rear – Independent trailing arm double wishbone type

Dimensions†

- Overall length: 4625mm
- Overall width: CV & CV6 – 1815mm
- Overall width: Cruiser, Cruiser L, SX6 & ZR6 – 1855mm
- Overall height: CV & CV6 – 1695mm,
- Overall height: Cruiser, Cruiser L, SX6 & ZR6 – 1730mm
- Wheelbase – 2660mm
- Front and rear track – 1560mm
- L4 Ground clearance (unladen) – 202mm
- V6 Ground clearance (unladen) – 200mm
- Approach angle (degrees) – 30
- Departure angle (degrees) – 26
- Ramp over angle (degrees) – 20

Weights/Capacities

- Seating capacity – 5
- Fuel tank capacity (litres) – 60

Kerb weight‡

- CV – AWD (manual) 1545kg
- CV – 2WD (manual) 1490kg
- CV – AWD (automatic) 1585kg
- CV – 2WD (automatic) 1525kg
- Cruiser, Cruiser L – AWD (manual) 1555kg
- Cruiser – 2WD (manual) 1500kg
- Cruiser, Cruiser L – AWD (automatic) 1595kg
- Cruiser – 2WD (automatic) 1535kg
- CV6 – 1650kg
- SX6, ZR6 – 1665kg

Towing capacity‡

- Without trailer brakes – 750kg
- L4 With trailer brakes – 1500kg
- V6 With trailer brakes – 1900kg

4 cylinder CV features

Exterior

- Body coloured front and rear bumpers
- Body coloured power exterior mirrors
- Body coloured door handles
- Tinted UV cut glass
- 17" steel wheels
- 225/65R17 101H tyres
- Rear mudflaps
- Body coloured rear spoiler
- Touch up paint
- Mirror mounted turn lamp

Interior

- Steering wheel mounted audio controls
- Front seat slide and recline adjustment
- Driver's seat height adjustment
- Front seat height adjustable headrests
- 60/40 split fold rear seat
- Remote release fold flat rear seat
- Rear seat slide and recline adjustment
- Rear seat centre armrest
- 3 rear seat height adjustable headrests
- Driver and passenger sunvisor with illuminated vanity mirror and cover
- Tonneau cover and cargo net
- Air conditioning with dust removing filter
- Power windows
- 3-spoke urethane steering wheel
- Tilt and telescopic steering column adjustment
- Cigarette lighter and removable ashtray

Instruments and Controls

- Cruise control
- Optitron instrumentation
- Tachometer
- Automatic transmission gear indicator in dash
- Day/night interior mirror
- Front variable intermittent windscreen wipers
- Rear windscreen wiper and washer
- Rear window demister
- Auto-off headlamps and taillamps
- Digital clock and outside temperature gauge
- Power accessory socket

Storage

- Passenger side dual glovebox
- Centre console with storage box lid
- Sunglasses holder
- Front door pockets
- Drink holders
- Map pockets
- Cargo area under-floor storage

Lighting

- Door operated interior dome lamp with delay
- Front map lamps
- Illuminated ignition
- Luggage compartment lamp

Sound system*

- AM/FM radio with MP3 compatible single disc in-dash audio unit with Bluetooth™ capabilities and MP3/USB connection
- Audio Input compatible with iPod® or other portable MP3 players
- 6 speakers

Safety

- Active Braking with intelligence (AB-i) incorporating Anti-skid Braking System (ABS) with Brake Assist (BA) and Electronic Brake-force Distribution (EBD)
- Global Outstanding Assessment (GOA) body
- Toyota Safe-T-Cell
- Driver and front passenger SRS airbags
- Driver and front passenger pre-tensioning and forcelimiter seatbelts
- Front seatbelt height adjustment
- 3-point lap-sash rear seatbelts
- Automatic transmission shift lock
- Automatic Locking Retractor (ALR) seatbelts for child seats in the outer rear seating positions
- Child restraint anchorage points
- Vehicle Stability Control (VSC)
- Traction Control (TRC)
- Hill-start Assist Control (HAC)
- Downhill Assist Control (DAC) [Automatic transmission model only]

Security

- Engine immobiliser
- Remote central locking including tailgate
- Key in ignition/door lockout override
- Tonneau cover
- Remote fuel lid release
- Fuel cap holder and tether
- Security coded audio system
- Spare wheel lock nut

Options

- Front side, side curtain and driver's knee SRS-airbags and front dual zone climate control air conditioning

4 cylinder CRUISER features in addition to or upgrade of CV features

Exterior

- Front fog lamps
- Roof rails
- Privacy glass
- 17" 5-spoke alloy wheels
- Body coloured overfender flares

Interior

- Premium gear knob
- Premium steering wheel
- Front dual zone climate control air conditioning

Instruments and Controls

- Auto-on headlamps

Lighting

- Front footwell lamps

Sound system*

- AM/FM radio with MP3 compatible 6 disc in-dash LCD audio unit with Bluetooth™ capabilities and MP3/USB connection

Safety

- Front side, side curtain and driver's knee SRS-airbags

4 cylinder Cruiser L features in addition to or upgrade of Cruiser features

Interior

- Power tilt and slide moonroof
- Leather accented interior
- Driver's seat power adjustment
- Driver's seat power lumbar adjustment
- Heated front seats

Instruments and Controls

- Electro-chromatic rear view mirror

V6 CV6 features in addition to or upgrade of CV features

Exterior

- Sports headlamps
- Chrome front grille with V6 badge

Safety

- Front side, side curtain and driver's knee SRS-airbags

Interior

- Front dual zone climate control air conditioning

V6 SX6 features in addition to or upgrade of CV6 features

Exterior

- Front fog lamps
- Roof rails
- Privacy glass
- 17" 6-spoke alloy wheels
- Body coloured overfender flares

Interior

- Premium gear knob
- Premium steering wheel
- Tilt & slide moonroof

Instruments and Controls

- Auto on headlamps

Lighting

- Front footwell lamps

Sound system*

- AM/FM radio with MP3 compatible 6 disc in-dash LCD audio unit with Bluetooth™ capabilities and MP3/USB connection

V6 ZR6 features in addition to or upgrade of SX6 features

Interior

- Leather accented interior
- Driver's seat power adjustment
- Driver's seat power lumbar adjustment
- Heated front seats

Instruments and Controls

- Audio Visual Navigation (AVN) system incorporating DVD-based Satellite Navigation†
- Electrochromatic rear view mirror

Sound System (Replaces audio unit on SX6)

- AM/FM radio with 4 disc in-dash CD changer with MP3 compatibility, audio input and Bluetooth™ phone capability‡

KEY

± Fuel consumption will vary depending on driving conditions/style, vehicle conditions and options/accessories.

‡ Source of fuel consumption data: ADR81/02 combined (L/100km).

† Some vehicle dimension figures are approximate and may vary due to options and accessory fitment.

° Kerb weights are nominal and will vary depending on options and accessories.

Towing capacity subject to regulatory requirements towbar design, vehicle design and towing equipment limitations.

^ iPod® is a registered trademark of Apple Inc.

> The Bluetooth word mark is owned by Bluetooth SIG, Inc. Bluetooth™ will only operate with telephones enabled with compatible Bluetooth™ wireless technology (HFP (Hands Free Profile) v1.0 or later and OPP (Object Push Profile) v1.1 or later international standards). OPP functionality only works on satellite navigation equipment.

† Current navigation mapping database encompasses major capital and primary national road networks as well as offering some coverage in regional areas.

* Audio unit available from November 2009 production.

□ USB connectivity not available on V6 ZR6.